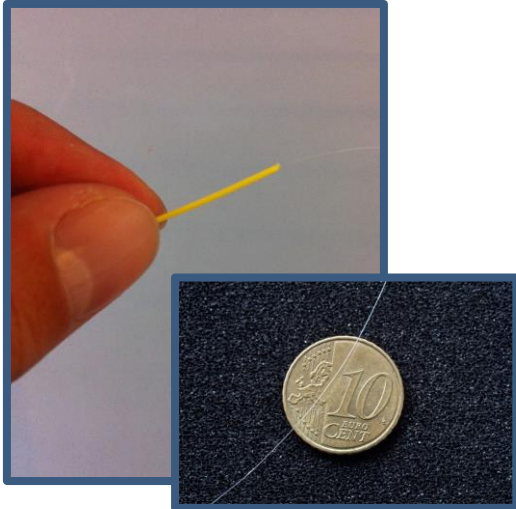


SHUTE Sensing Solutions A/S was founded in 2015 at the Department of Photonics Engineering at the Technical University of Denmark (DTU). SHUTE has developed a novel and unique microstructured polymer optical fiber (mPOF) sensor system, which enables real-time monitoring of **strain/stress**, **humidity**, **temperature** and vibrations in points along a hair-thin optical fiber. Hence the name SHUTE.

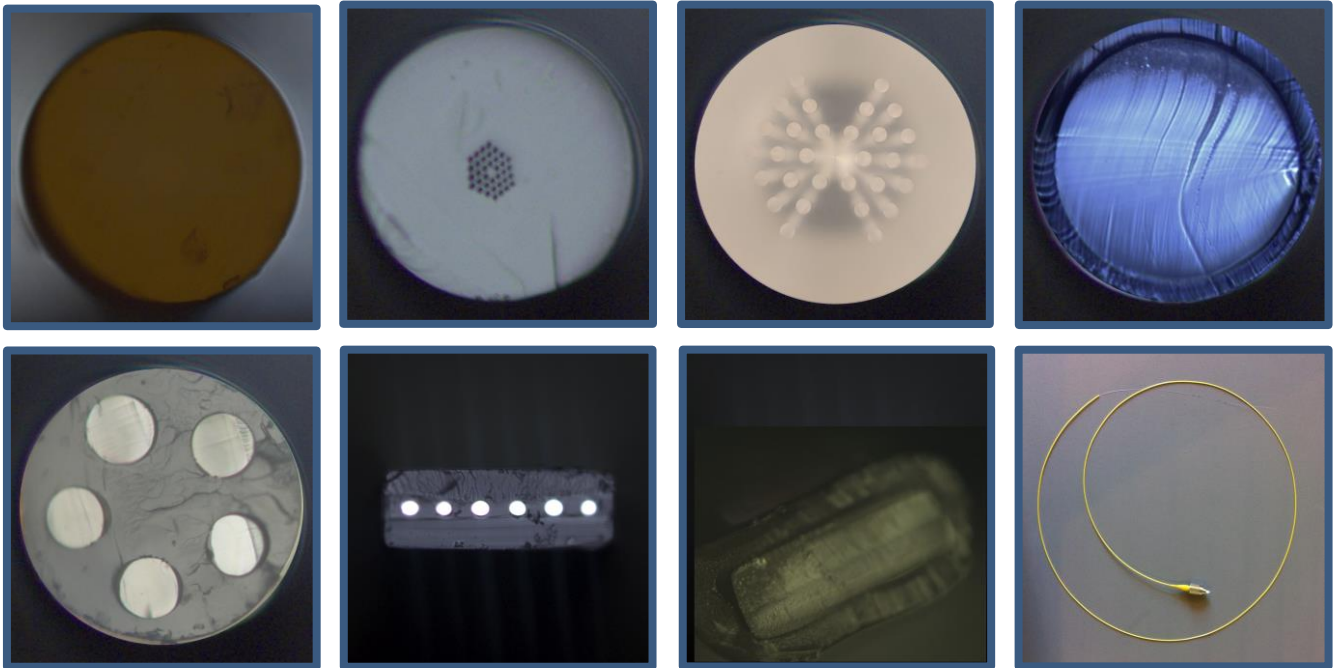


### SHUTE Polymer Optical Fibers

At SHUTE we manufacture hair-thin polymer optical fibers, ideal for sensing and transmitting light.

We have a full in-house production facility, which means that we can customize fibers according to specific needs.

We can offer customized polymer fibers in terms of length, diameter, claddings, core structures, geometry, polymers, etc. Contact us to learn more and discuss your needs.



### SHUTE customized Polymer Optical Fibers:

- Polymers, e.g.: PMMA, Zeonex, PC, PSU, PES
- Possible to combine different polymers, e.g, Zeonex core, PMMA cladding
- Multiple claddings and protective jackets
- Different hole structures, have demonstrated hole structure down to  $\varnothing$ : 1 micron
- Bio-compatible and are currently involved in clinical trials in EU
- Can be connectorized, e.g.: FC/APC or E2000 optical fiber connector

**For more information visit [www.shute.dk](http://www.shute.dk) or feel free to call us on +45 2338 6728 to discuss how SHUTE technology can assist you in optimizing your sensing needs.**